

# MODIFICATION KIT

## SLAVING TO AUTOMATIC DISPLAY SWITCHING



For the following Tektronix Plug-ins:

Type 53/54C serial numbers 3710- up  
Type CA serial numbers 101-64009

### DESCRIPTION

This modification allows Channels A and B, of either Type CA or 53/54C, to be slaved to the respective sweeps of Type 547, when the 547 is operated in A ALT B mode, and the plug-in is operated in the Alternate mode. This modification does not change the operation of the CA or 53/54C when operated in any other instrument.

040-0391-01

**Publication:**  
Instructions for 040-0391-01  
August 1966

**Supersedes:**  
040-0391-00

© 1966, Tektronix, Inc.  
All Rights Reserved.

**040-0391-01**

Page 1 of 3

12-5-69

101.08



## PARTS LIST

Quantity	Part Number	Description
1 ea	152-0061-00	Diode, silicon, 100mA 175 PIV
1 ea	214-0210-00	Spool, w/3ft. silver-bearing solder
2 ea	281-0506-00	Capacitor, cer, 12pF 500V
1 ea	281-0518-00	Capacitor, cer, 47pF 500V
1 ea	302-0184-00	Resistor, comp, 180k 1/2W 10%
1 ea	(175-0522-00)	Wire, #22 solid, 10in. white-orange
1 ea	1-910D	Tag, MODIFIED INSTRUMENT, gummed back

## INSTRUCTIONS

**IMPORTANT:** When soldering to the ceramic strips, use the silver-bearing solder supplied with this kit.

## A. FOR CA PLUG-INS

- ( ) 1. Relocate the junction of R3378 (160k) and R3380 (220k) from CSA-1 to CSA-2.
- ( ) 2. Remove the bare strap connecting CSA-1 to CSA-2.
- ( ) 3. Replace the bare strap connecting pin 1 and pin 5 of V3382 with a silicon diode from the kit. The cathode (banded end) to pin 1.
- ( ) 4. Relocate the connection of C3385 (a 12pF capacitor) from pin 5 of V3382 and solder to pin 1 of V3382.
- ( ) 5. Install a 47pF capacitor (from kit) from pin 5 of V3382 to CSA-1.
- ( ) 6. On CA's below serial number 34790, install a 180k 1/2W resistor (from kit) from pin 5 of V3382 to +225V at CSB-3.
- ( ) 7. On CA's above serial number 34790, replace the resistor between pin 5 of V3382 and CSB-3 with the 180k 1/2W resistor from the kit.
- ( ) 8. Install the white-orange wire (from kit) between CSA-1 and pin 7 of the amphenol connector.

## THIS COMPLETES THE INSTALLATION

- ( ) Check wiring for accuracy.
- ( ) Moisten back of MODIFIED INSTRUMENT tag (from kit) and place it on the Manual Schematic page affected by this modification.

## INSTRUCTIONS (cont)

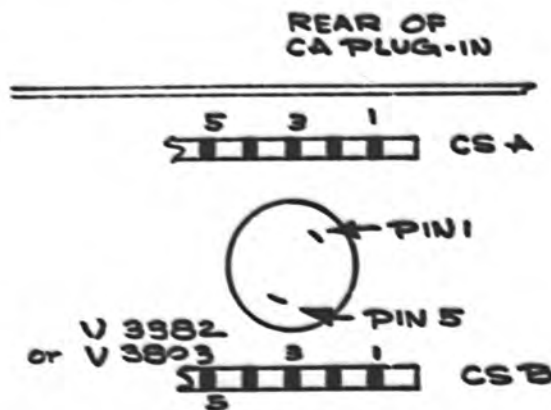
## B. FOR 53/54C PLUG-INS:

- ( ) 1. Move the junction of R3713 (160k) and R3723 (220k) from CSA-1 to CSA-2.
- ( ) 2. Remove the bare wire connecting CSA-1 and CSA-2.
- ( ) 3. Replace the bare wire connecting pins 1 and 5 of V3803 with D3382 silicon diode from the kit. Place the cathode (banded end) to pin 1.
- ( ) 4. Relocate one end of C3753 (a 12pF capacitor) from pin 5 of V3803 to pin 1 of V3803 (SN 14078-up) or solder a 12pF capacitor (from kit) between pins 1 and 2 of V3803 (SN 3710-14077).
- ( ) 5. Solder the remaining 12pF capacitor (from kit) between pins 1 and 7 of V3803 (if not present).
- ( ) 6. Install the 47pF capacitor (from kit) between pin 5 of V3803 and CSA-1.
- ( ) 7. Install the 180k 1/2W resistor (from kit) between pin 5 of V3803 and +225V at CSB-3.
- ( ) 8. Install the white-orange wire (from kit) between CSA-1 and pin 7 of the amphenol connector.

## THIS COMPLETES THE INSTALLATION

- ( ) Check wiring for accuracy.
- ( ) Moisten back of MODIFIED INSTRUMENT tag (from kit) and place it on the Manual Schematic page affected by this modification.

CH:cet



**SLAVING TO AUTOMATIC DISPLAY SWITCHING**

Type 53/54C -- SN 3710- up  
 Type CA -- SN 101-64009

**GENERAL INFORMATION**

This modification allows Channels A and B, of either Type CA or 53/54C, to be slaved to the respective sweeps of Type 547, when the 547 is operated in A ALT B mode, and the plug-in is operated in the Alternate mode. This modification does not change the operation of the CA or 53/54C when operated in any other instrument.

The information on these pages supersedes the information in your Manual.

**ELECTRICAL PARTS LIST**

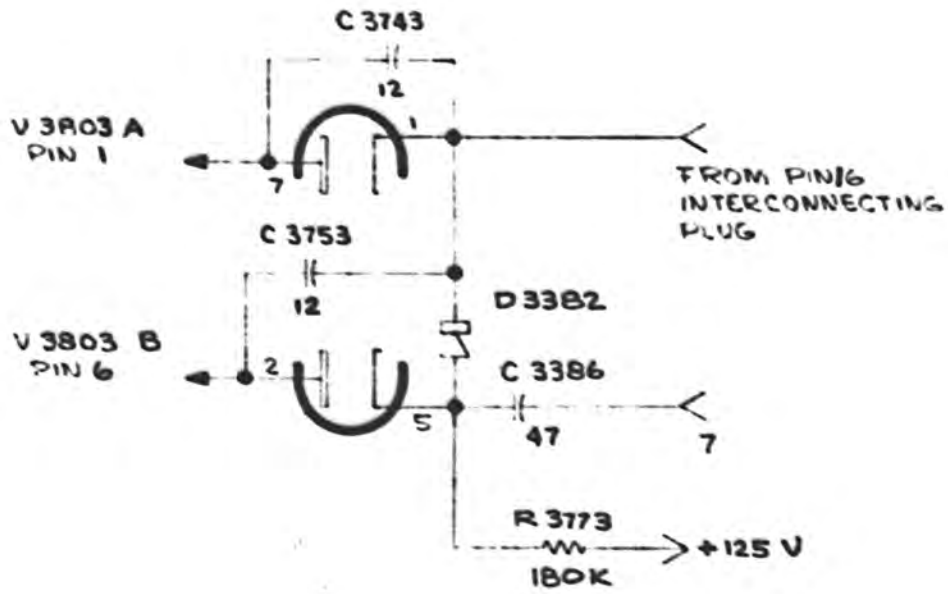
Values fixed unless marked variable.

Ckt. No.	Part Number	Description			
<b>CAPACITORS</b>					
C3386	281-0518-00	47 pF	Cer	500V	
C3743**	281-0506-00	12 pF	Cer	500V	
C3753**	281-0506-00	12 pF	Cer	500V	
<b>DIODES</b>					
D3382	152-0061-00	Silicon	100 mA		
<b>RESISTORS</b>					
R3383 or R3385 * R3773**	302-0184-00	180k	1/2W	comp	10%

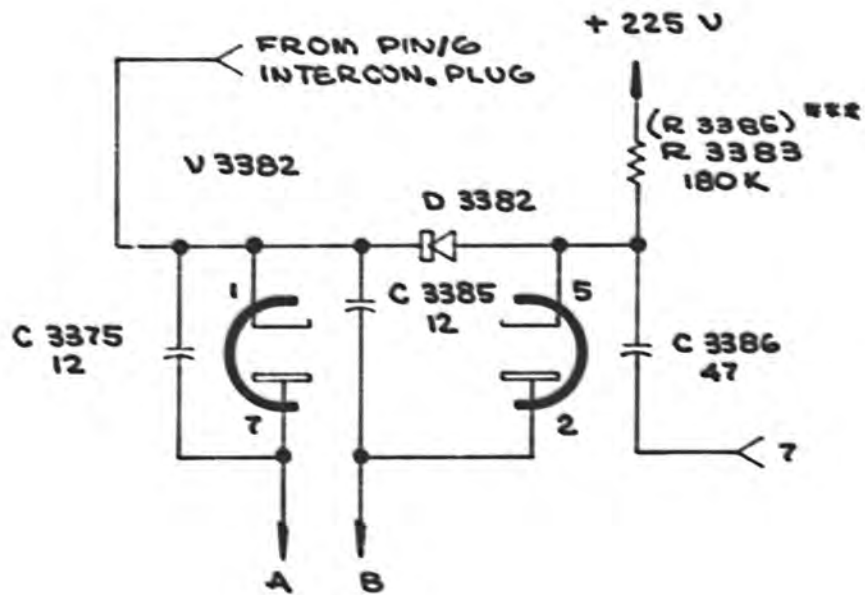
\* Ckt. No. for early CA plug-ins

\*\* Ckt. No. for 53/54C plug-ins

SCHEMATICS



53/54C PREAMPLIFIER  
(Partial Diagram)



CA PREAMPLIFIER  
(Partial Diagram)

\*\*\* Ckt.No. for early CA Plug-ins